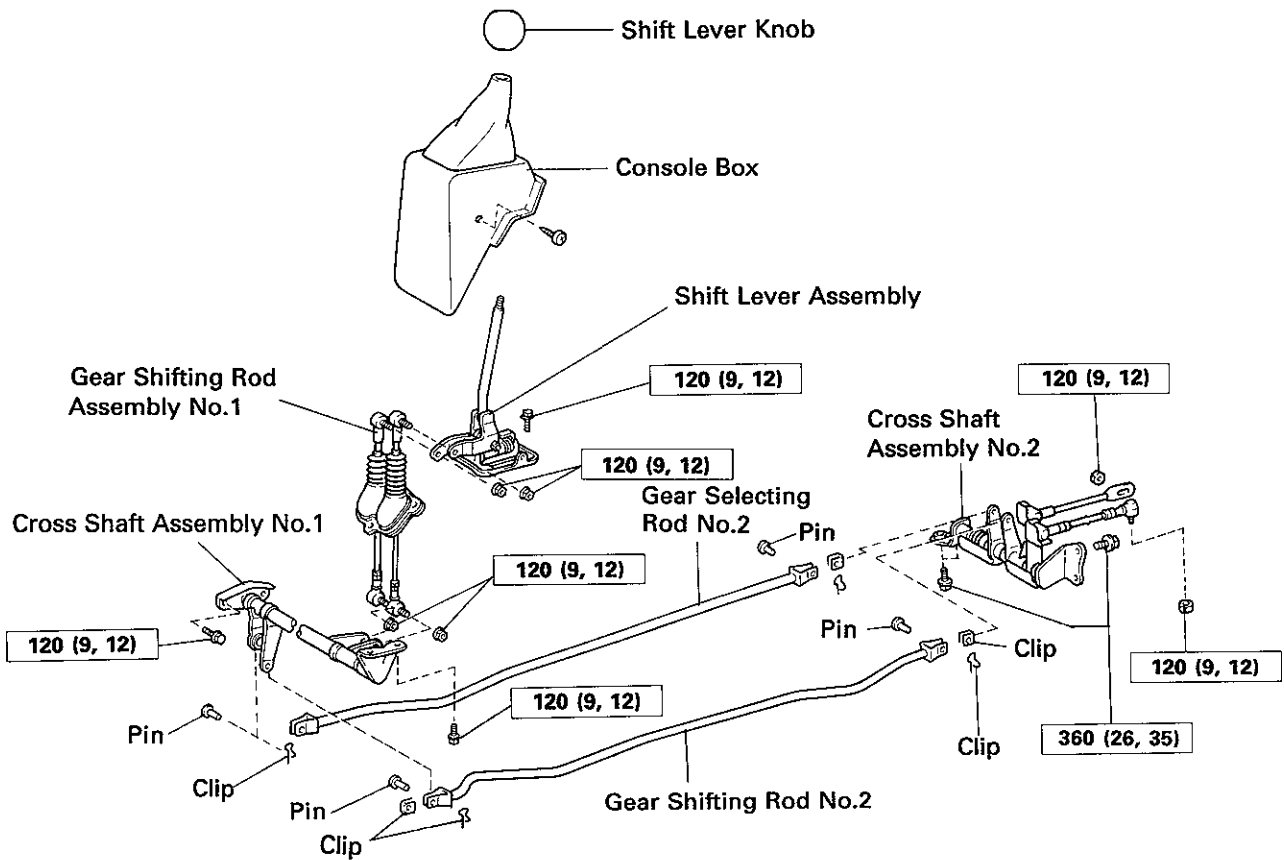
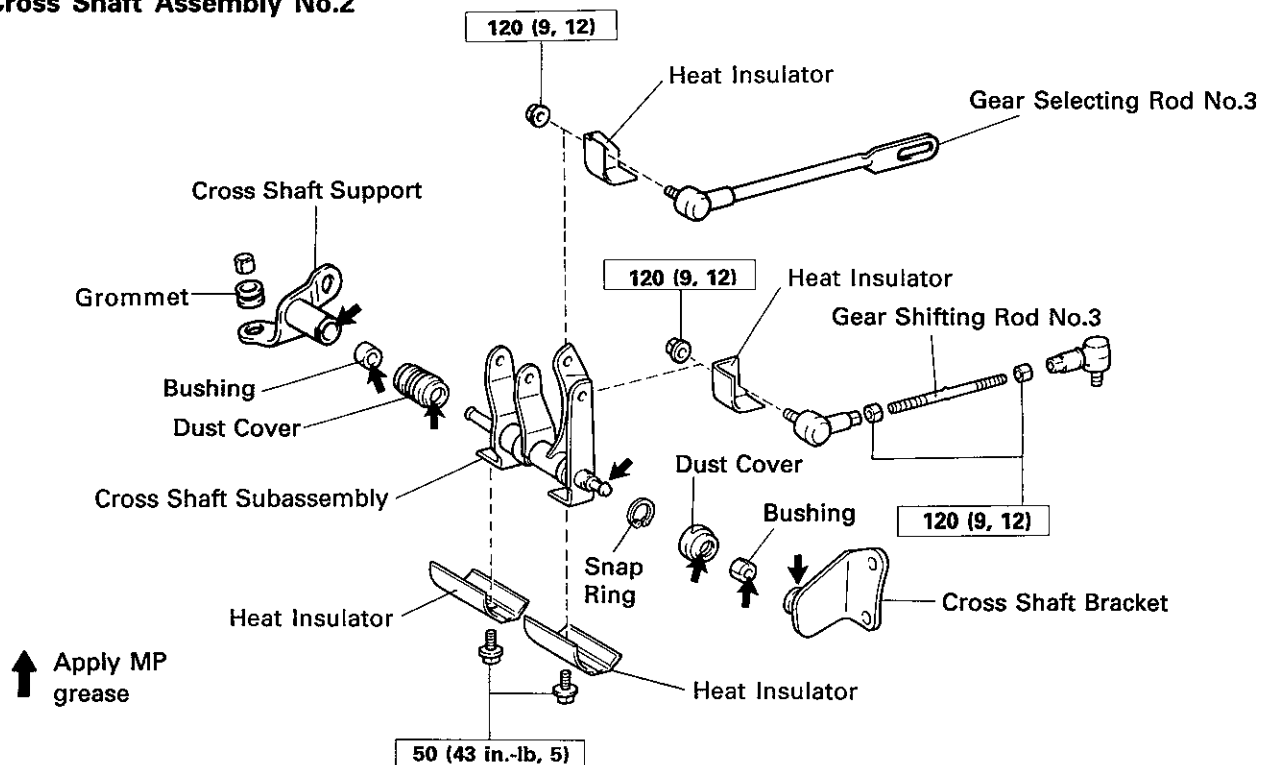


SHIFT LEVER AND CONTROL LINK COMPONENTS



Cross Shaft Assembly No.2



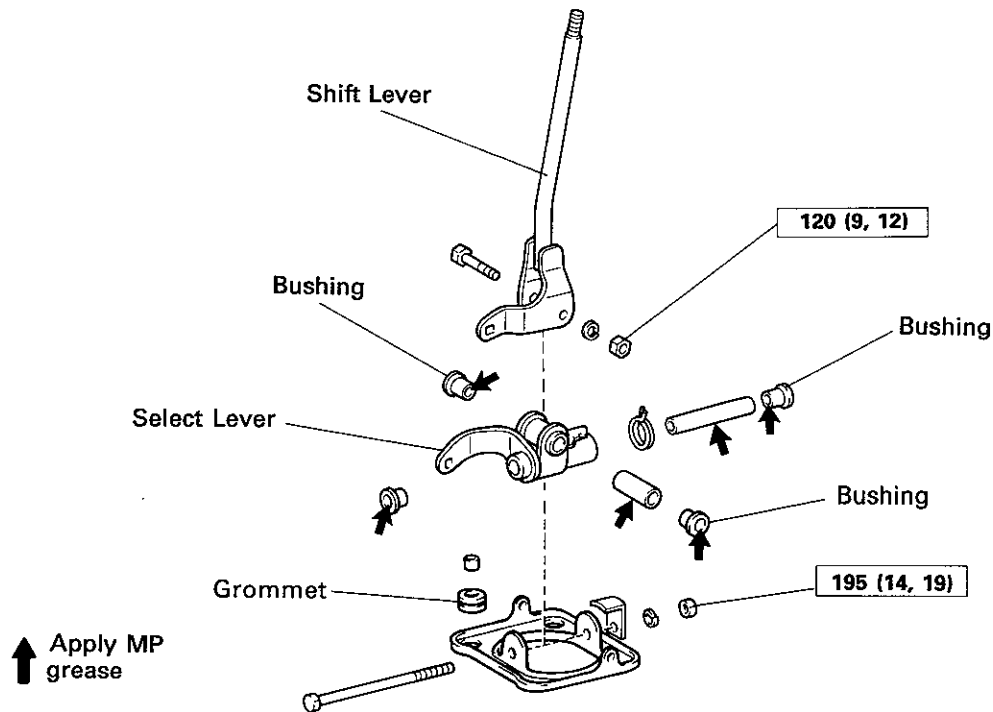
↑ Apply MP grease

kg-cm (ft-lb, N-m) : Specified torque

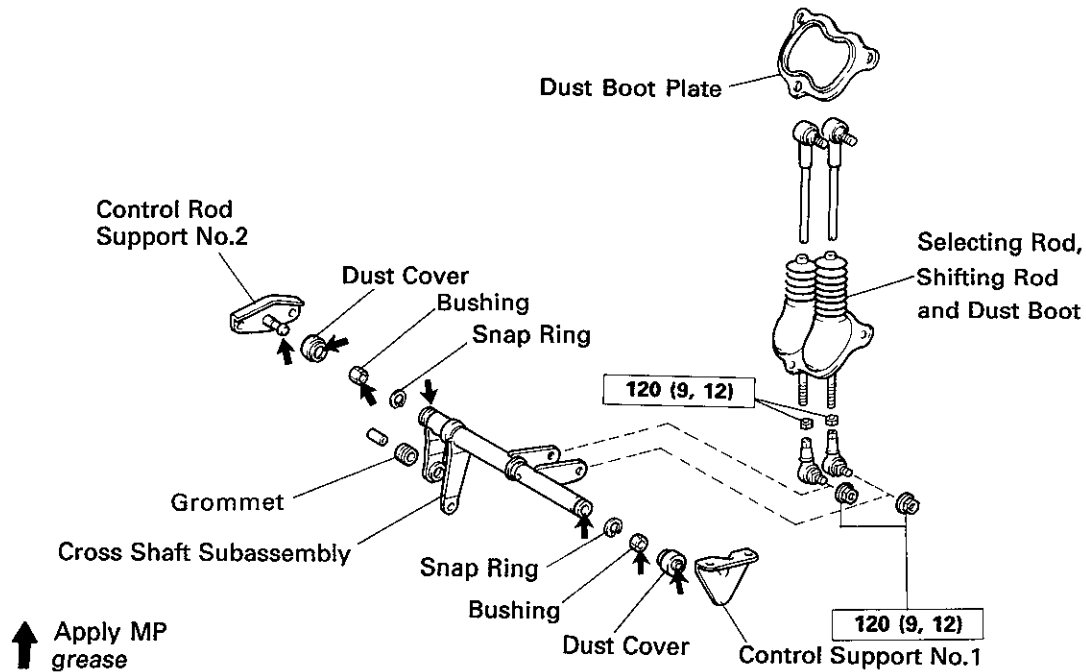
MT0556
MT0557

COMPONENTS (Cont'd)

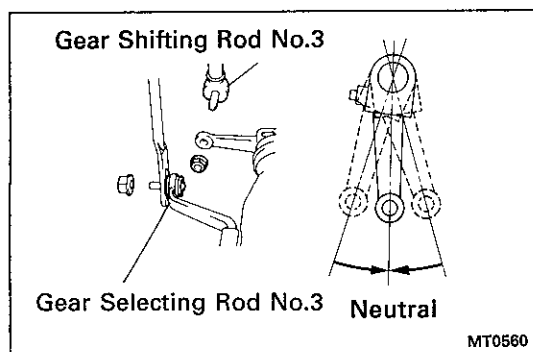
Shift Lever



Cross Shaft Assembly No.1



kg-cm (ft-lb, N·m) : Specified torque

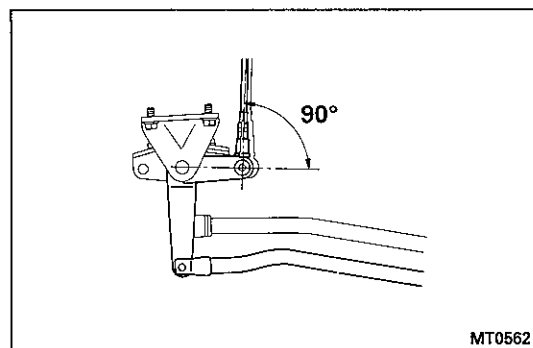
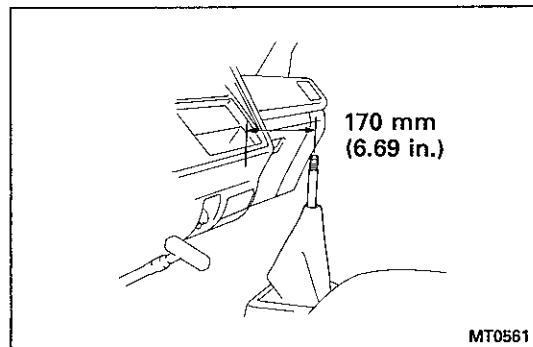


ADJUSTMENT OF SHIFT LEVER NEUTRAL POSITION

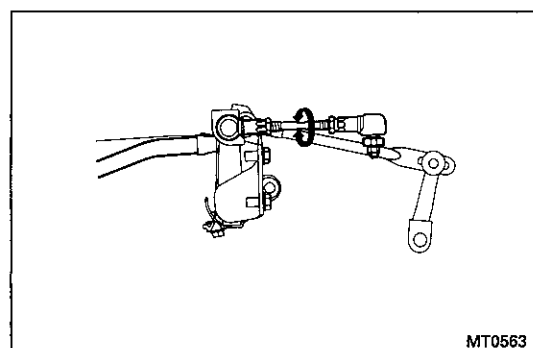
1. ADJUSTMENT OF SHIFT DIRECTION

- Disconnect gear shifting rod No.3 and shift the neutral position.
- Loosen the gear selecting rod set nut.
- Remove shift lever knob.
- Maintain standard clearance between the instrument panel and the screw tip of the shift lever.

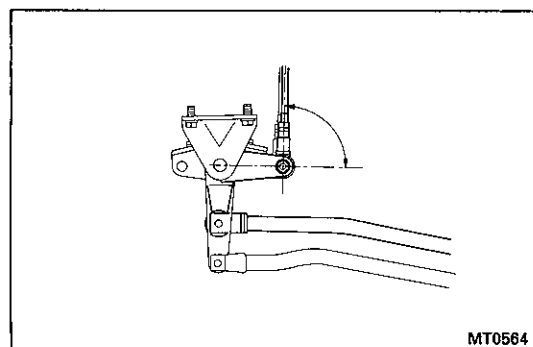
Standard clearance: About 170 mm (6.69 in.)



- In the condition in (d), turn the ball joint so that the shifting lever of cross shaft No.1 is at right angles to shifting rod No.1.

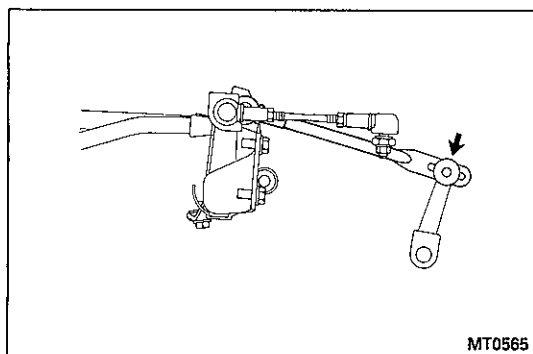


- In the condition in (d), adjust the length of the gear shifting rod.



2. ADJUSTMENT OF SELECT DIRECTION

- Move the shift lever to left and right, and check that the select spring is working.
- Turn the ball joint so that the selecting lever of cross shaft No.1 is at right angles to selecting rod No.1.



(c) Connect the gear selecting rod No.3.